

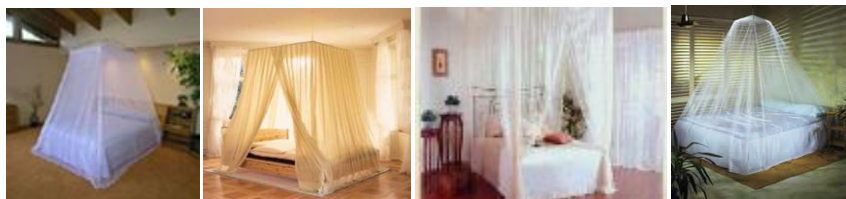
Quality Sleep Solution

The sleeping environment is by far the most important part of the whole electromagnetic pollution story. We live in a modern environment where levels of manmade electromagnetic pollution are growing exponentially and we cannot avoid it in our workplaces, schools and much of our leisure locations. In the vast majority of cases it is near impossible to achieve a safe level in every room of our home.

It is with all of this in mind that increasingly we advise our clients to do whatever they can to minimise their exposure to this pollution in their day to day lives but to concentrate resources in the bedroom. It has been our experience and is increasingly so with our clients that if you rid as much as possible your bedroom or your bed area from electromagnetic pollution, then your body is able to recuperate and refresh during the night, allowing you to better tolerate whatever your daily routine has to throw at you in terms of electromagnetic pollution. This would seem to support Dr George Carlo's theory that the mechanism behind electrosensitivity is cellular lockdown mode where human cells lockdown and are unable to receive nutrients or expel waste as they see most forms of manmade electromagnetic pollution as a form of attack.

At Wireless-Protection, we believe that the health of individuals continues to improve as a result of improved cellular efficiency at night, allied to the uninterrupted natural brain activity which otherwise would not be achievable in an environment plagued by radio frequency radiation.

The most cost efficient way to achieve this is to surround the sleeping area ie bed with radio frequency reflective material. At Wireless-Protection we have designed and evolved a range of radio frequency reflective canopies, testing them ourselves over a period of years before releasing them for sale to the general public. It is our belief and the experience of both ourselves and our customers that levels of radio frequency in the bedroom should always be reduced to ALARA (as low as reasonably achievable) and the bed canopy is a great tool in the fight for ALARA radio frequency in the bedroom.



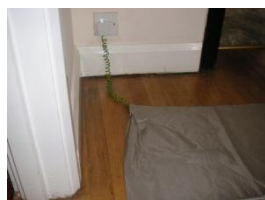
Dome Canopy Four Poster
Chromax RFR Naturell

Four Poster
Chromax RFR

Dome Canopy
Chromax RFR

It is our recommendation that a bed mat providing electric field shielding (connected to an earthing point) be used in conjunction with the canopy. The canopy provides an excellent protection from radio frequency radiation but as in most buildings if there is an electric field penetrating the sleeping area from below, this should also be removed. The mat will also mop up any RFR that otherwise might enter the sleeping area and be trapped by the canopy.

Our research and development would indicate that there are less and less frequent occasions when the under bed protection is not necessary and it would be our recommendation that some form of precaution be taken to deal with electrical emissions from below.



Earthed Mat



From PC size through to Super King



Earthing cable & plug